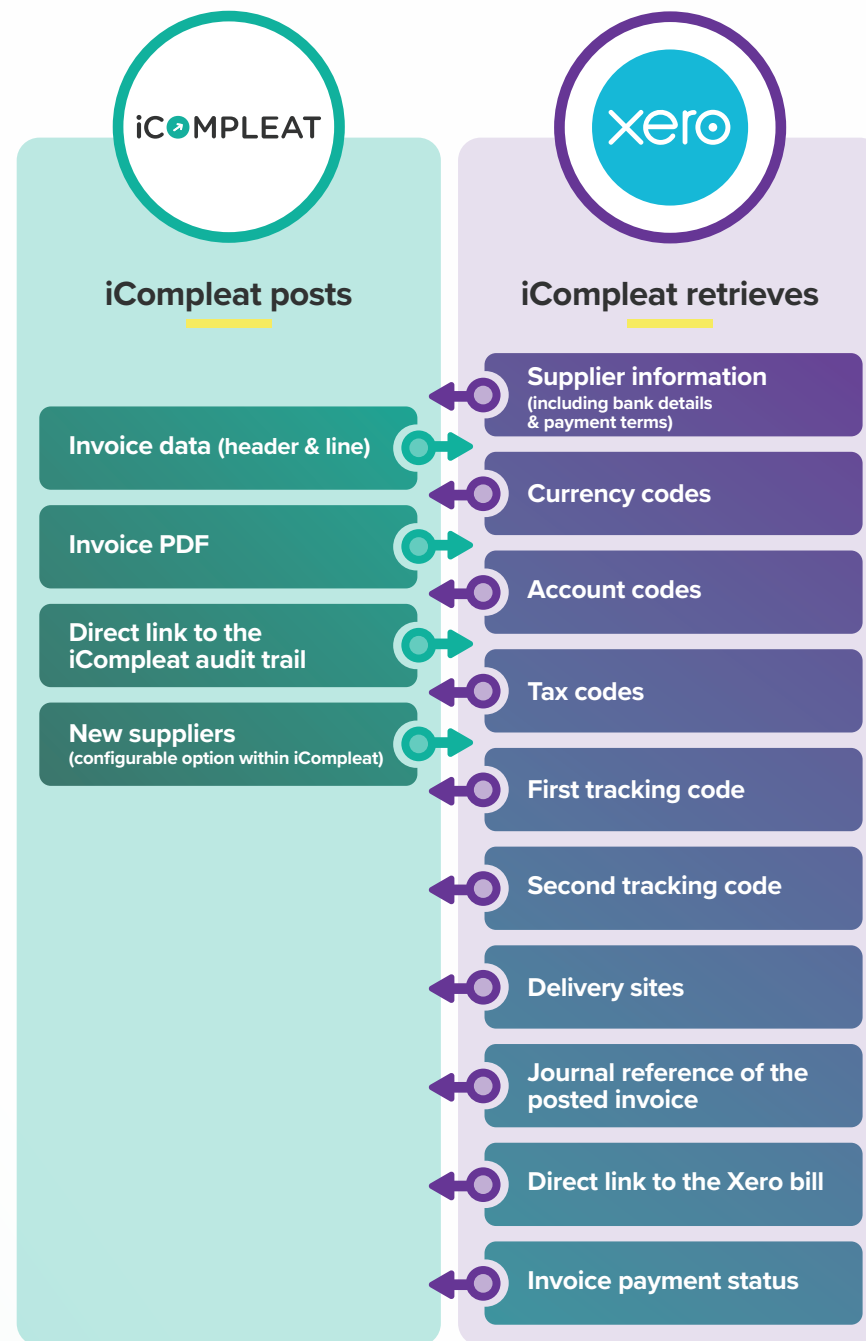


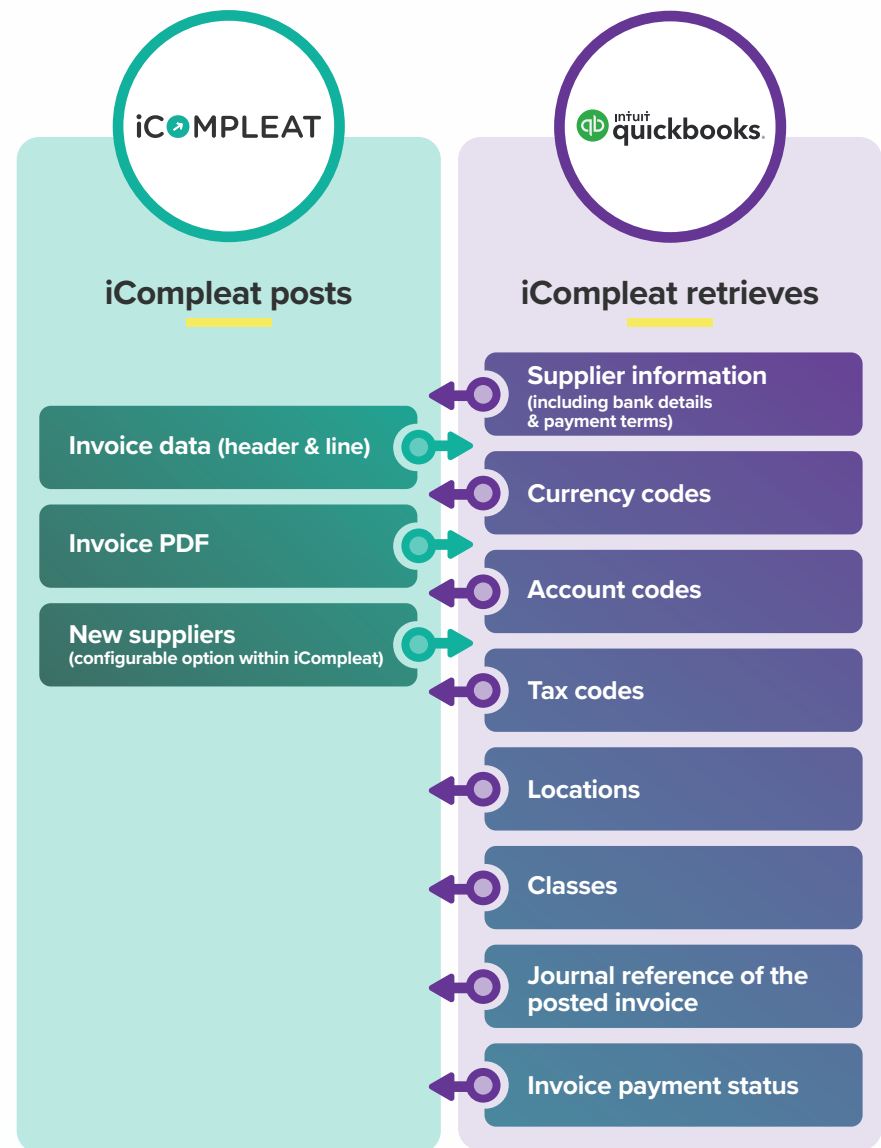
# How does iCompleat integrate with Xero?

The following chart indicates what information is able to pass through the connector between iCompleat and Xero.



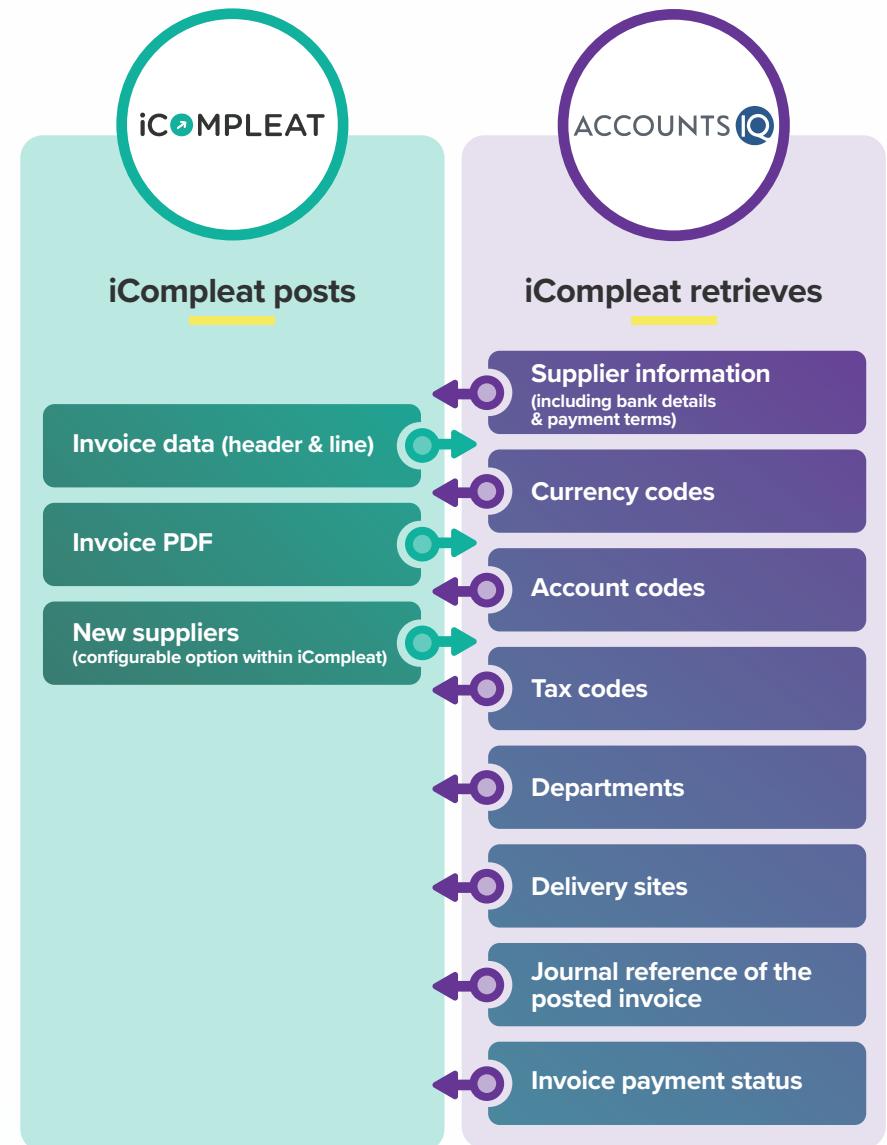
# How does iCompleat integrate with Quickbooks online?

The following chart indicates what information is able to pass through the connector between iCompleat and Quickbooks online.



# How does iCompleat integrate with Accounts IQ?

The following chart indicates what information is able to pass through the connector between iCompleat and Accounts IQ.



# How does iCompleat integrate with Sage 50?

The following chart indicates what information is able to pass through the connector between iCompleat and Sage 50.

iCOMPLEAT

**iCompleat posts**

Invoice data (header & line)

Invoice PDF (this can be configured in Sage to appear in reports ONLY\*)

Purchase order number / transaction reference number

New suppliers (configurable option within iCompleat)

sage 50

**iCompleat retrieves**

Supplier information (including bank details & payment terms)

Currency codes

Account codes

Tax codes

Departments

Cost centres

Projects

Charity funds

Delivery sites

Journal reference of the posted invoice

Invoice payment status

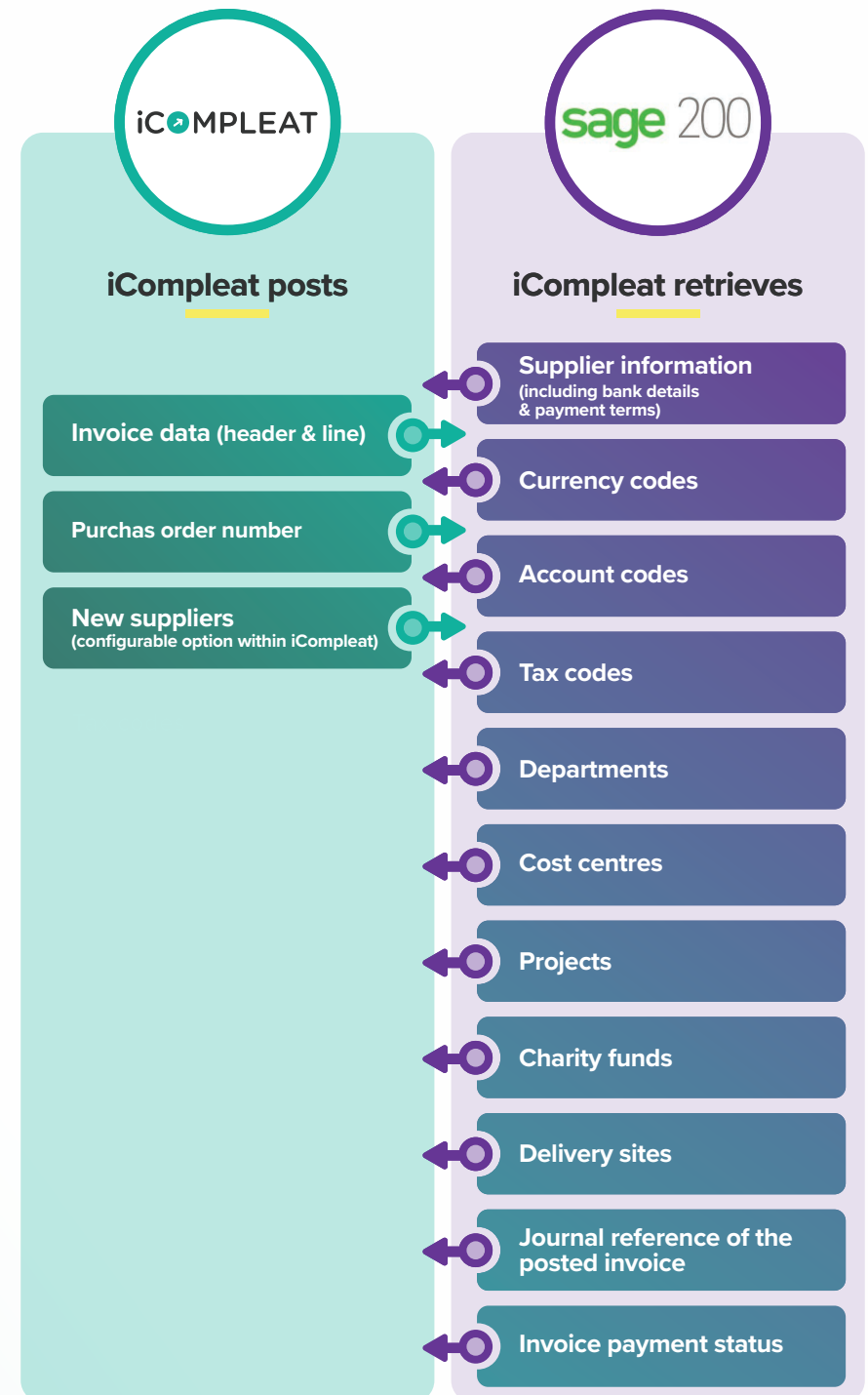
**\*Note\*** iCompleat utilises the 'extra reference' field in Sage, populating it with the transaction's iCompleat INV number. You can run reports on this field in Sage which allows you to view the invoice PDF from within your Sage application.





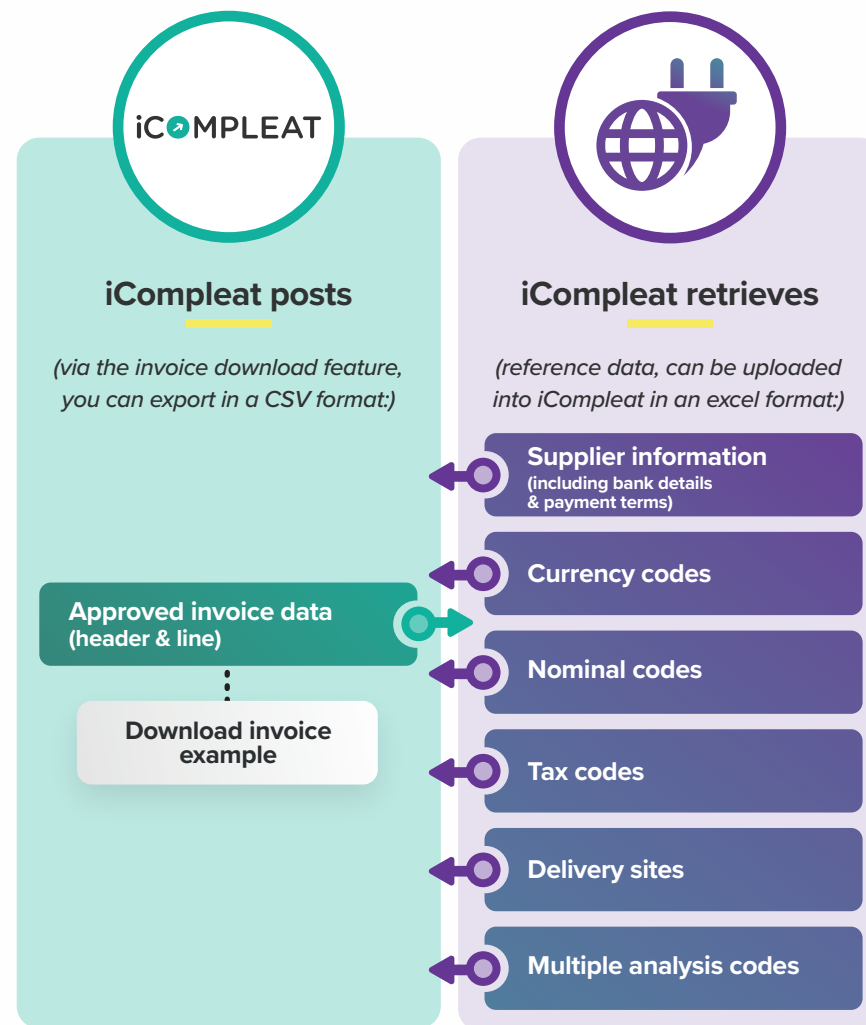
# How does iCompleat integrate with Sage 200?

The following chart indicates what information is able to pass through the connector between iCompleat and Sage 200.



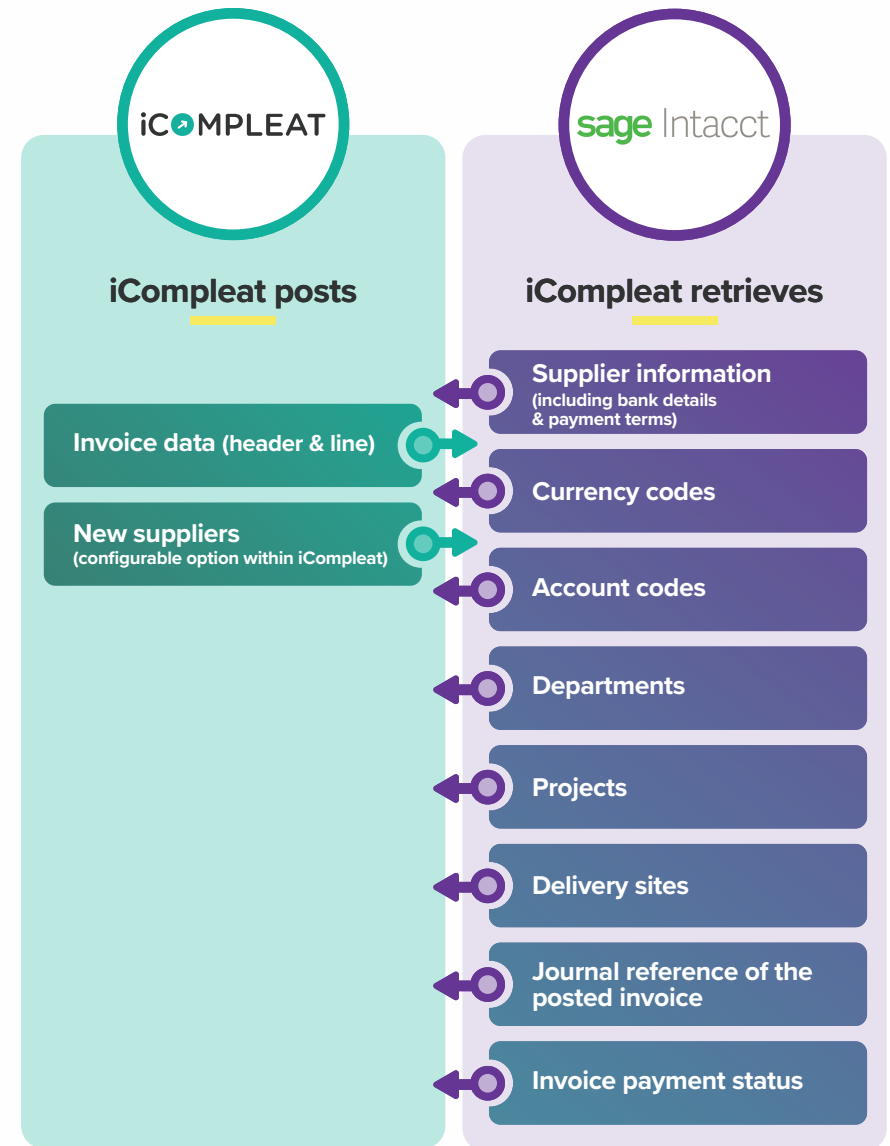
# How does the iCompleat universal connector work?

The following chart indicates what information is able to pass through iCompleat's universal connector.



# How does iCompleat integrate with Sage Intacct?

The following chart indicates what information is able to pass through the connector between iCompleat and Sage Intacct.



# How does iCompleat integrate with Peachtree?

The following chart indicates what information is able to pass through the connector between iCompleat and Peachtree by Sage (the USA version of Sage 50).

